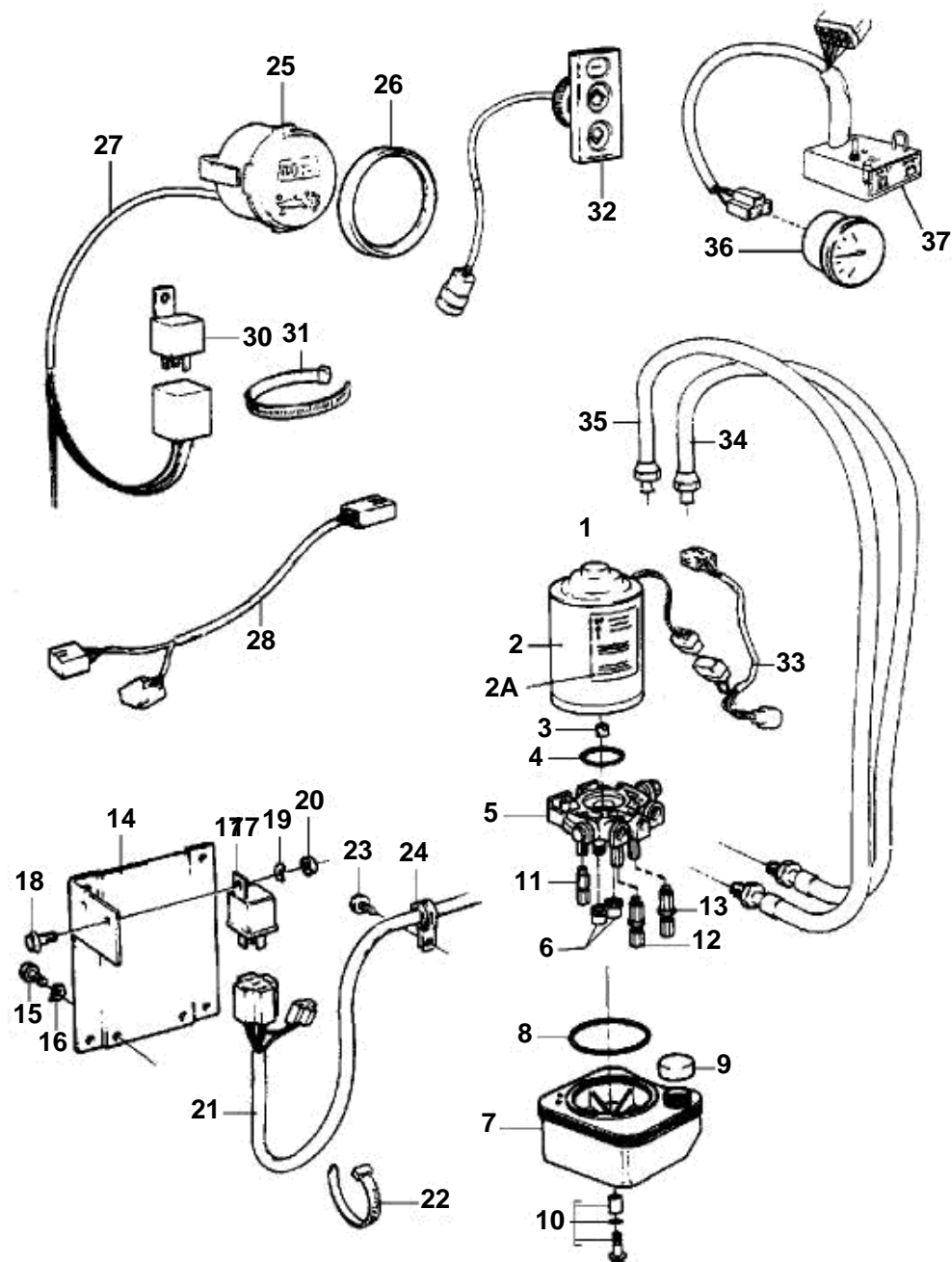


DP, DPX - HYDRAULIC PUMP; TRIM INSTRUMENT & INSTALLATION COMPONENTS



DP, DPX - HYDRAULIC PUMP; TRIM INSTRUMENT & INSTALLATION COMPONENTS

REF	PART NO.	QTY	DESCRIPTION	NOTES
1	3857006	1	Hydraulic pump kit, 290 DP	
2	854525	1	• Engine	
2a	853097	1	• Sign	
3	854526	1	• • Clutch	
4	854527	1	• • O-ring	
5	854528	1	• Valve housing	
6	854530	2	• • Filter	
7	854531	1	• Reservoir	
8	854532	1	• • O-ring	
9	854533	1	• • Cover	
10	854534	1	• • Small parts kit	
11	854535	1	• Relief unit	
12	873057	1	• High pressure unit	
13	854537	1	• Low pressure unit	
14	854438	1	• Bracket	
15	970945	2	• Screw	
16	941908	2	• Spring washer	
17	854357	2	• Relay	
18	948663	2	• Screw	
19	941905	2	• Spring washer	
20	955780	2	• Nut	
21	872448	X	• Cable kit	
22	948210	1	• Strip clamp	
23	955138	4	• Screw	
24	952630	4	• Clamp	
25	872498	1	Trimmer	
26	858643	1	Front ring	
27	856821	1	Cable kit	
28	853066	1	Cable trunk	For dual station
30	872300	2	Relay	
31	949666	X	Strip clamp	
32	873617	1	Control panel	
33	853032	1	Cable trunk	
	948294	X	• Receptacle housing, 9-Pole	
	965822	X	• Cable terminal, 3.5 x 1 x 2.5	
	853498	X	• Receptacle housing, 3-Pole	
	853521	X	• Cable terminal, For 853498	
34	873228	1	Hydraulic hose, Front	
35	873229	1	Hydraulic hose, Rear	
36	873136	1	Trimmer, Analog	
37	873226	1	Control unit, Analog	

7797430 - - 0-0020

GR950271

Upd: 22 NOV 2005